



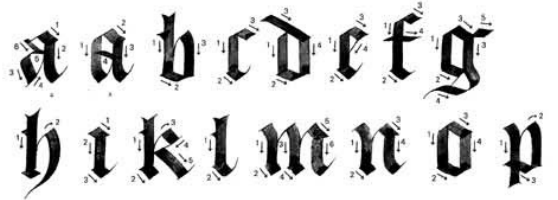
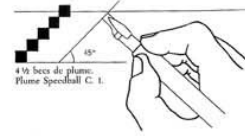
TYPOGRAPHIC DESIGN

CALLIGRAPHIC STYLES

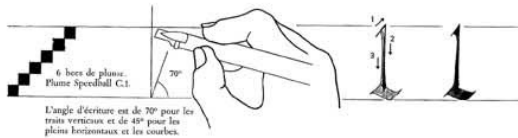
Capital Roman



Gothic



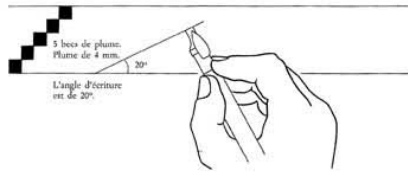
Rustic



Renaissance



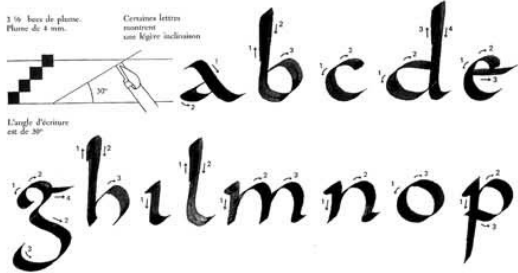
Oncial



Italic Chancery



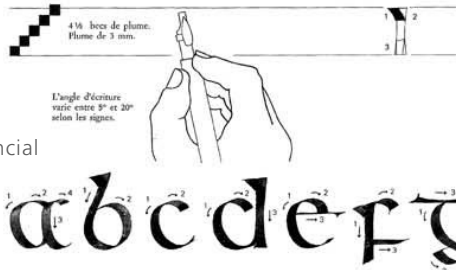
Carolingia



Italic Contemporary



English Semioncial



Copperplate



Ci-dessus, anglaise minuscule d'après Ramses Selding, Barcelone, 1830.